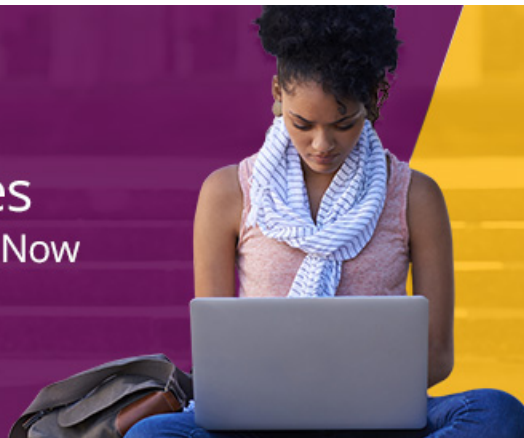


## Trends and Resources to Strengthen Your Programs Now



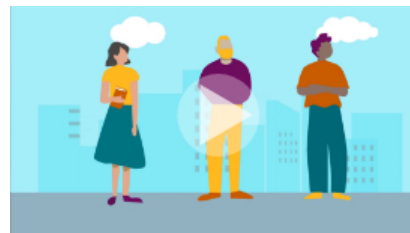
GRE® eUpdate

September 2019

### The Essential Role of GRE® Scores in Graduate Admissions

When used appropriately, GRE scores serve a unique role in helping decision makers fairly compare applicants from different backgrounds. Without this common, objective measure, other components of the application can unfairly bias students, especially those from underrepresented groups.

[Learn More](#)



### Transparency, Inclusivity and Predictability

New GRE Program Executive Director Alberto Acereda, formerly a department chair at Arizona State University, discusses key trends shaping graduate admissions.

[Learn More](#)



### GRE Fee Reduction Program Gets Even Better

Changes to the program — such as giving a \$100 value in free test prep to those who receive a 50 percent fee reduction on test fees — can help further reduce barriers for students with financial need.

[Learn More](#)



## Redesigned GRE Website Helps Visitors Find Key Resources

Find admissions, recruitment and advising resources more easily at the redesigned GRE institutional website. New sections include planning for the admissions process and resources for advising students.

[Learn More](#)



## GRE® Search Service Helps You Find Your Best Prospects

Get the applicants you want by searching a database of 500,000+ graduate-ready prospects by 30+ search criteria, including intended graduate major, geographic location and planned date of enrollment.

[Learn More](#)



We post program updates on a regular basis. Sign up for [GRE Program emails](#), visit the [GRE Information Center](#) and follow us on [LinkedIn®](#) so you don't miss a beat. Please share the GRE eUpdate with your colleagues.

ADVERTISEMENT

[Privacy Policy](#) | [Subscribe](#) | [Unsubscribe](#)

**ETS — Measuring the Power of Learning.®**

Copyright © 2019 by Educational Testing Service. All rights reserved. ETS, the ETS logo, MEASURING THE POWER OF LEARNING and GRE are registered trademarks of Educational Testing Service (ETS). All other trademarks are property of their respective owners. 379633773

ETS | Rosedale Road | Princeton, NJ 08541